



MPK50

BATTERY POWERED



REMOTE CONTROL



- ✓ Spare battery on board
- ✓ LCD screen
- ✓ With joysticks

TWO-SECTION MECHANICAL JIB

700 KG SECOND SECTION JIB



3-POSITION TILTING PULLEY HEAD

MAIN BOOM

- ✓ 5000 kg MAX capacity
- ✓ 9,2 m MAX height
- ✓ 6,1 m MAX radius
- ✓ 2 hydraulic extensions by chains



1800 KG FIRST SECTION JIB

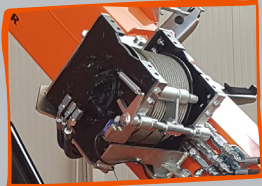


LONG-LASTING BATTERY



- ✓ Lead-acid batteries
- ✓ 48 V - 620 Ah
- ✓ 110V - 220V charger
- ✓ Battery charger on-board

WINCH



- ✓ 1000 kg single line
- ✓ Up to 60 m rope
- ✓ Single line hook
- ✓ 5 falls pulley block

+65°

± 5° ROTATION

-10°

FRONTAL HYDRAULIC STABILISING BAR



RADIO REMOTE CONTROLLED DRIVING

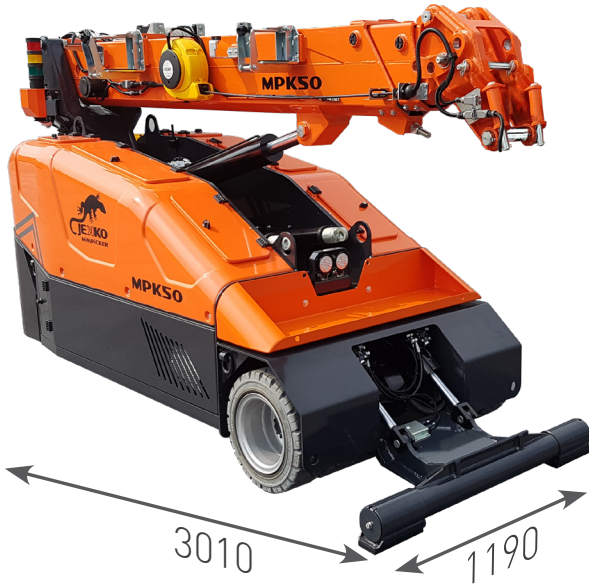
FRONTAL TRACTION

WHITE TIRES





DIMENSIONS (mm)

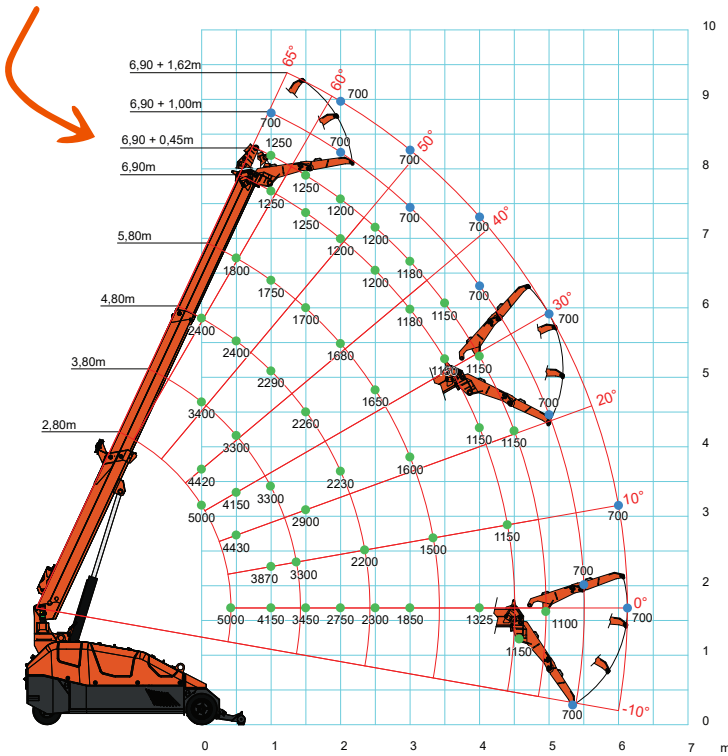


SCAN FOR MORE TECHNICAL DATA

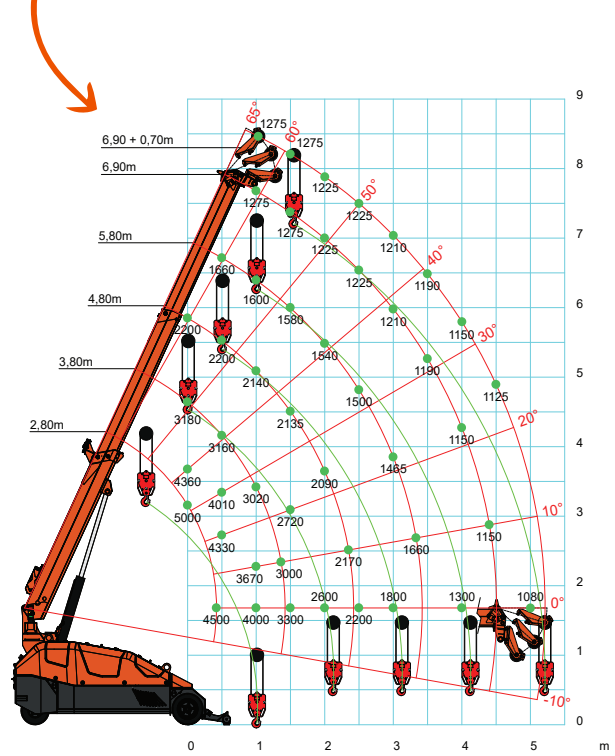


	Kg
MPK50	3450
Counterweight	1000
Jibs	30+20

LOAD CHART WITH FULL-LENGTH JIB (m - kg)



LOAD CHART WITH WINCH CONFIGURATION (m - kg)



ACCESSORIES

PULLEY HEAD
5000 kg MAX capacity

SHORT MECHANICAL JIB
1800 kg MAX capacity

LONG MECHANICAL JIB
700 kg MAX capacity

